

Mill Creek Watershed Newsletter



INTRODUCTION TO THE NEW WATERSHED COORDINATOR

Hello!

My name is Annalee Epps, and I will be the new Watershed Coordinator for the Mill Creek Watershed. Moving forward, I am the new contact for events, projects, questions, and ideas. I am excited to meet stakeholders and get to know the area in the next few months!



I am a graduate of Texas A&M, with a B.S. in Biology and a M.S. in Soil Science, so I hope to bring some valuable new experience and expertise to this project. After spending many childhood hours playing in creeks and streams, I love putting on my boots and getting down into the water, especially when it means we can make a difference for water quality at a local scale.

Please reach out if you have any questions for me, concerns about the project moving forward, or if you would just like to introduce yourself. I know that this job is all about community involvement and communication, so don't hesitate to call, email, or drop by my office if you're ever in College Station!

Annalee Epps

annalee.epps@ag.tamu.edu
(979)-845-2862

Newsletter Highlights

Introduction to the New
Watershed Coordinator

What is a Watershed
Protection Plan? - A
Brief Review

Upcoming Events 2023

Connect with Us



[Millcreek.tamu.edu](https://millcreek.tamu.edu)

TEXAS STATE
Soil & Water
CONSERVATION BOARD

Funding for this effort is provided through a Clean Water Act §319(h) Nonpoint Source Grant administered by the Texas State Soil and Water Conservation Board from the U.S. Environmental Protection Agency.

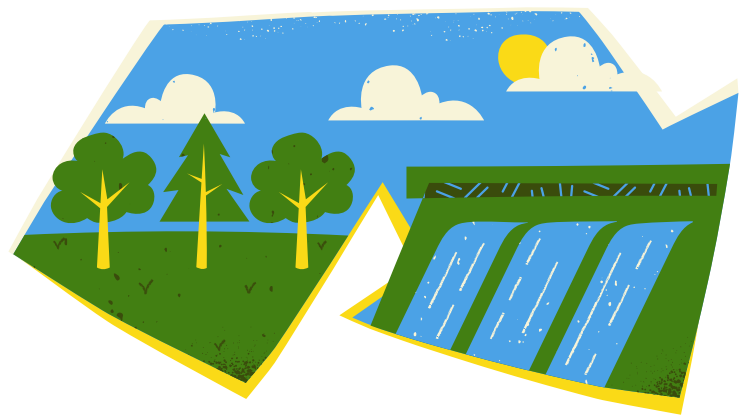
WHAT IS A WATERSHED PROTECTION PLAN? - A BRIEF REVIEW

Overview

A watershed protection plan (WPP) is a local, non-regulatory, voluntary mechanism for protecting or restoring water quality to a watershed. Local government, state and federal agencies, and non-governmental organizations can all contribute to a WPP. However, the power of a WPP is individual stakeholders coming together to address local issues. AgriLife Extension facilitates WPP implementation for Mill Creek by coordinating stakeholder meetings, educational programs, and providing support to entities seeking grants to protect water quality in the watershed.

Implementation

Putting the WPP into practice takes the coordination of individuals and organizations to implement best management practices, or BMPs. These BMPs include structural practices like grassed waterways and stream buffers, or management practices such as fertilizer use and proper waste disposal. However, as a voluntary program, these practices are enacted by stakeholders, and are not controlled by government entities. Education is key to allowing stakeholders to effectively implement BMPs, which is why programming is such an important piece of WPP.



Results

The ultimate goal of a WPP is to restore water quality for communities. As BMPs are adopted and stakeholders engage in stewarding their watershed, there is great potential for improvements in water quality. By promoting a unified approach to watershed protection and restoration, the WPP brings about community-driven results. We can contribute to this process by attending stakeholder meetings, educating ourselves on watershed management and BMPs, and committing to positive change.

Watershed Calendar

Spring

Coming Soon - Bacterial Source Tracking Informational and Stakeholder Meeting

April 22 - Earth Day

Celebrate by volunteering with a clean up event, planting a tree, or making a commitment to a new eco-friendly habit!

Summer

Lone Star Healthy Streams

Fall

Stream Cleanup Event

Texas Well Owner Network

Winter

Feral Hog Program

