



MILL CREEK WATERSHED PARTNERSHIP MEETING

FEBRUARY 10, 2022



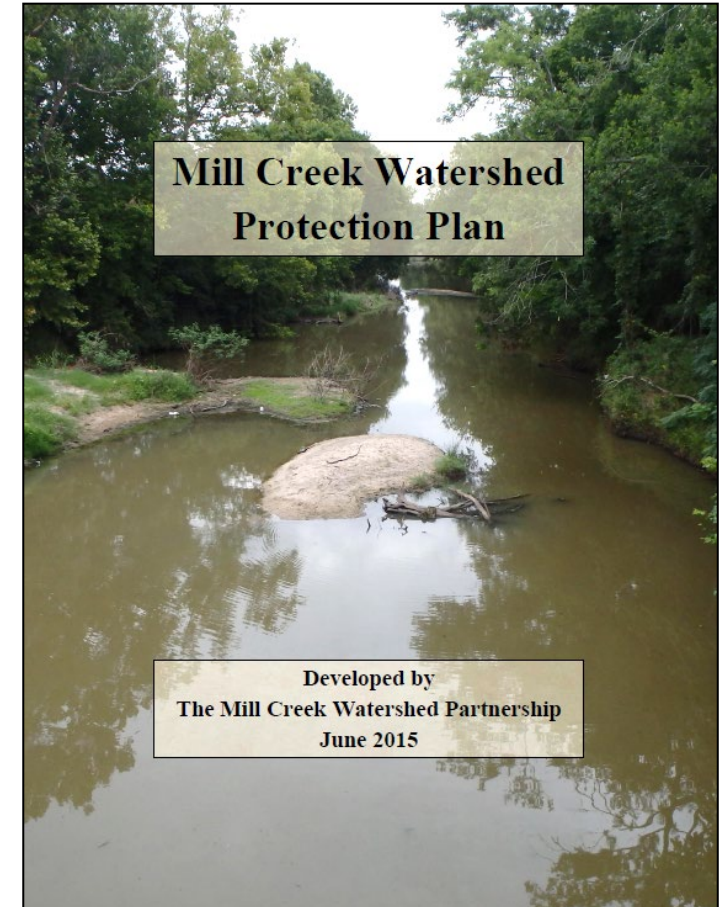
MILL CREEK WATERSHED

- 263,450 acres
- Predominantly rural
- Permitted discharges:
 - City of Bellville
 - City of Industry
 - City of Burton
 - Kieke Egg Farm



MILL CREEK WATERSHED PROTECTION PLAN

- 2014 – Mill Creek listed impaired due to elevated *E. coli*
- January 2015 – WPP initiated
- February 2016 – WPP accepted by EPA
- WPP functions to restore and protect water quality in Mill Creek
- All measures are voluntary
- Heavy focus on public outreach and education

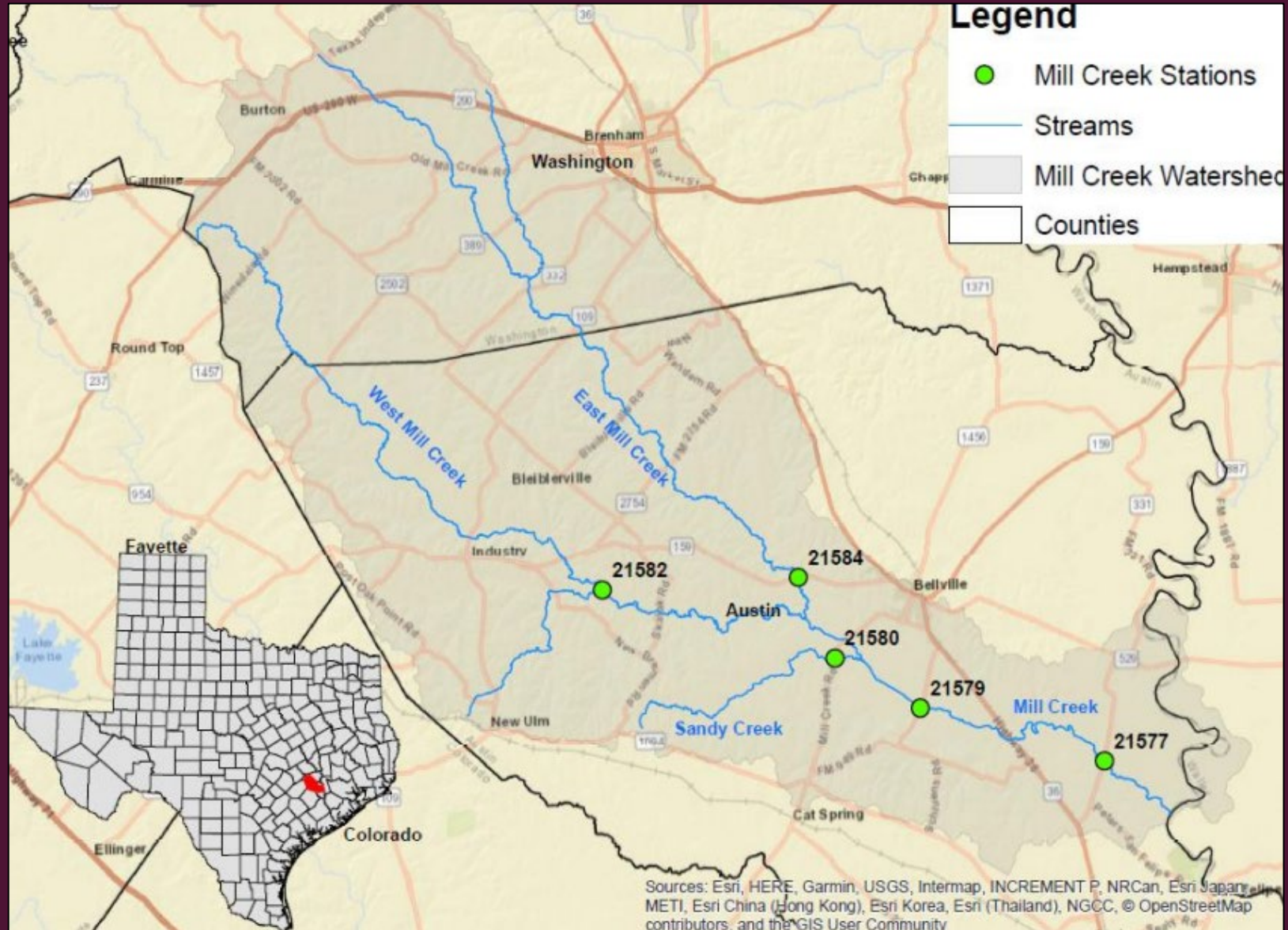


MAJOR SOURCES OF POLLUTION IN MILL CREEK

- The bacteria originates from nonpoint sources
- Potential sources identified in the WPP:
 - **Urban** (stormwater, pet waste)
 - **Agriculture** (livestock, cropland)
 - **Wastewater** (failing septic systems)
 - **Wildlife and non-domestic animals** (feral hogs, deer)



WATER QUALITY MONITORING



WATER QUALITY DATA

21577 – MC at FM 331

21579 – MC at FM 2429

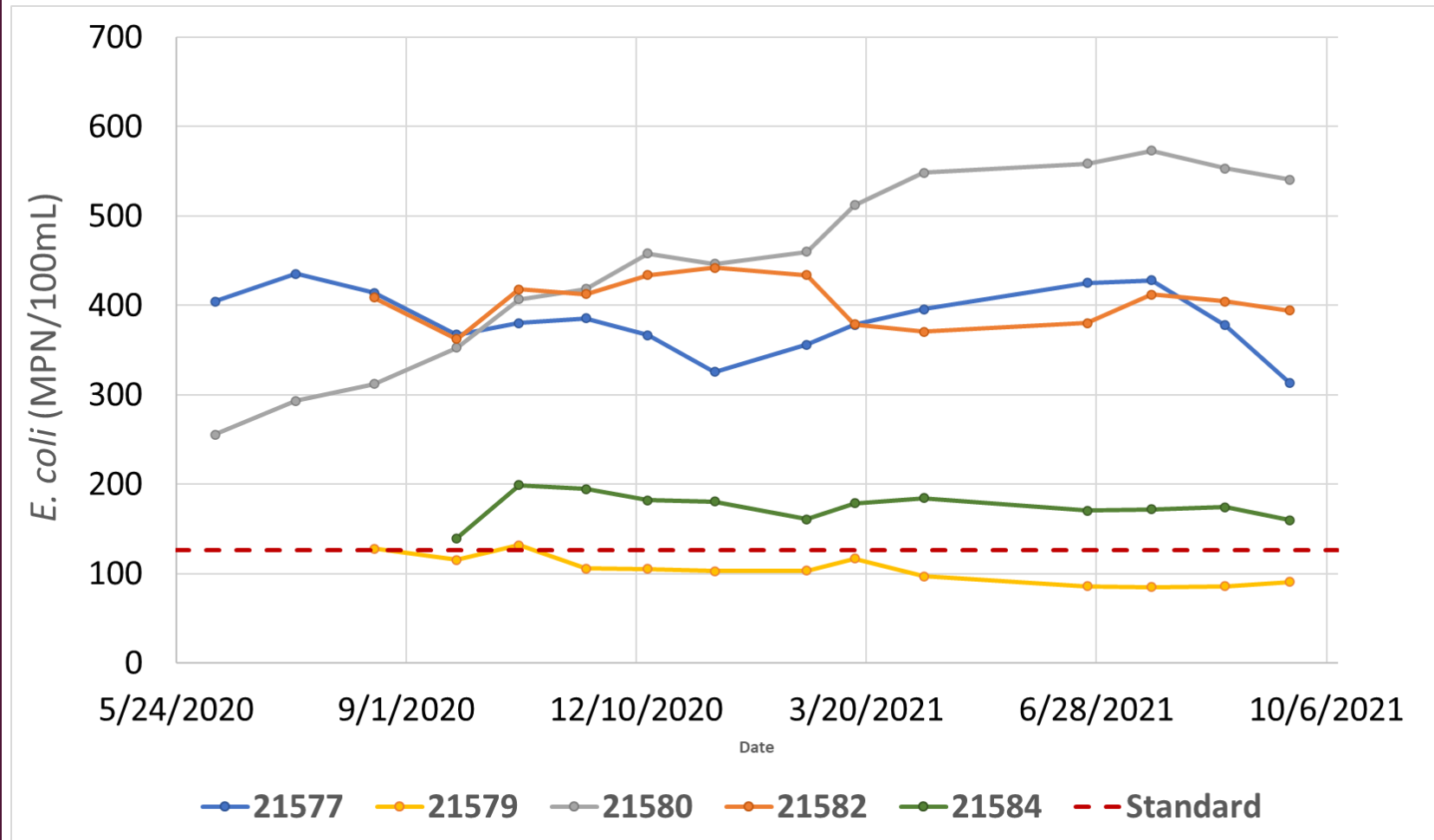
24580 – Sandy Creek at MC Rd.

21582 – W. MC at Tiemann Rd.


21584 – E. Fork MC at FM 159

Standard:

126 MPN/100mL



PUBLIC OUTREACH AND EDUCATION

- In 2020-2021, many events and programs had to be canceled or postponed 
- Face-to-face events resumed last August
- Watershed-wide Cleanup Day
- Upcoming events:
 - Mill Creek Cleanup Day (April, TBD)
 - Healthy Lawns Healthy Waters (June 10)
 - *Desired programs discussed today will be announced*



2021 CLEANUP DAY

- Targeted private landowners in the watershed
- Provided a centralized trash drop-off location at Bleiberville VFD
- 600 pounds of trash and debris removed



FUNDING OPPORTUNITY FOR SEPTIC SYSTEM OWNERS

- Financial assistance to septic system owners in the Mill Creek watershed
- Contact Watershed Coordinator
 - (979) 739-1097
 - millcreek@ag.tamu.edu



SIGNS OF FAILING SEPTIC SYSTEMS

- Standing water around your septic tank
- Unpleasant smell
- Bright green lush grass around your septic tank
- Sewage backup
- Slowly draining bathtubs, showers, and sinks
- Noises in your plumbing system
- Excessive growth of algae in nearby ponds

WANT TO GET INVOLVED?

- Attend Mill Creek Watershed Partnership meetings
- Stay in touch with your County Extension Agent
 - Austin County – **Stacie Villarreal**, Stacie.Villarreal@ag.tamu.edu or (979) 865-2072
 - Washington County – **Kara Matheney**, Kara.Matheney@ag.tamu.edu or (979) 277-6212
- Visit **www.millcreek.tamu.edu**
- Follow us on Facebook: **MillCreekWater**
- Reach out to the Watershed Coordinator at **millcreek@ag.tamu.edu** or (979) 845-2862

DISCUSSION: PARTNERSHIP PRIORITIES 2022

- Desired educational programs and events in 2022
- Watershed-wide Cleanup Day
- Want to join the Mill Creek Steering Committee? **6 spots available!**



THANK YOU!

Evgenia Spears, Ph.D.

Mill Creek Watershed Coordinator

Texas A&M AgriLife Extension Service

millcreek@ag.tamu.edu | (979) 845-2862

