

# **Mill Creek Watershed Protection Plan**

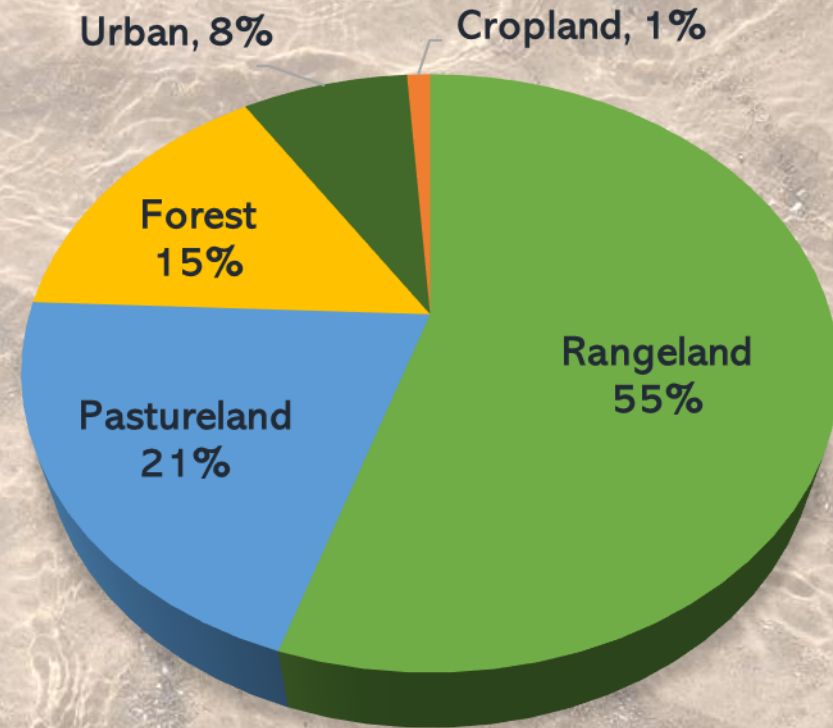
## **Implementation Updates**

Evgenia Spears, Ph.D.  
Watershed Coordinator  
Texas A&M AgriLife Extension Service

**October 1, 2021**



# Mill Creek Watershed

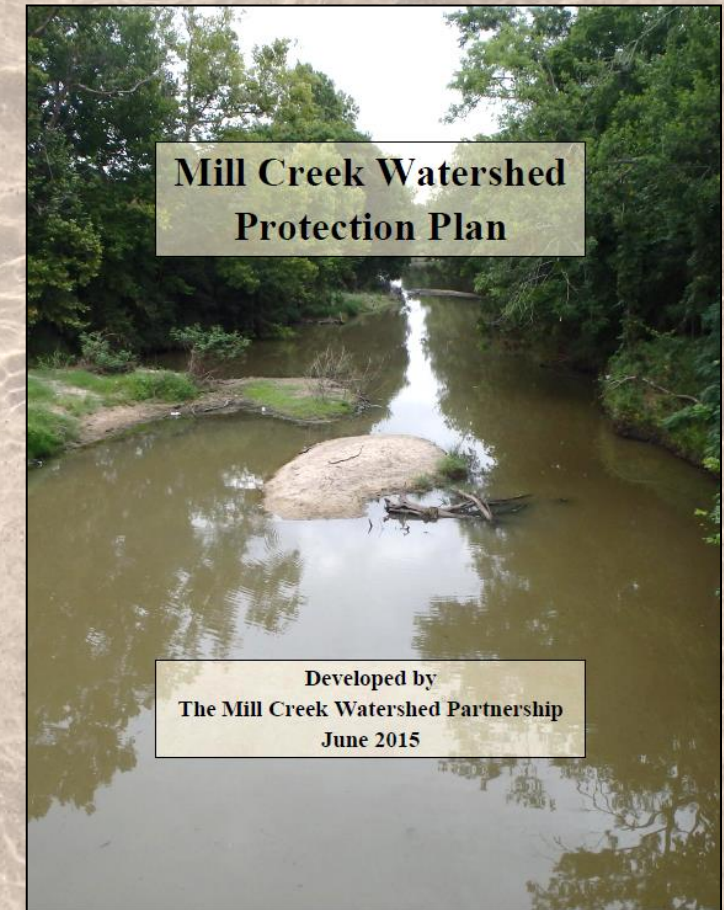


- 263,450 acres
- Predominantly rural and privately-owned
- Permitted discharges: the City of Bellville, City of Industry, and City of Burton; and Kieke Egg Farm



# Mill Creek Watershed Protection Plan (WPP)

- 2014 – Mill Creek listed impaired
  - Elevated levels of *E.coli* bacteria
- January 2015 – WPP initiated
- February 2016 – WPP accepted by EPA
- WPP functions to restore and protect water quality in Mill Creek
- All measures are voluntary
- Heavy focus on public outreach and education





# Major Sources of Pollution

- The bacteria originates from nonpoint sources
- Potential sources identified in the WPP:
  - Urban (e.g., stormwater, pet waste)
  - Agriculture (e.g., livestock, cropland)
  - Wastewater (e.g., failing septic systems)
  - Wildlife and non-domestic animals (e.g., feral hog, deer)





# What Is Being Done?

- Public outreach and education
- Watershed-wide Cleanup Day
- Routine water quality monitoring
- Water quality management plans (WQMPs)
- Online Homeowner Maintenance of Septic Systems class





# Public Outreach and Education

- Many events and programs had to be canceled or postponed COVID-19
- 2021 Watershed Cleanup Day
- Face-to-face programs are back!
  - Riparian and Stream Restoration (October 1)
  - Lone Star Healthy Streams (November 9)
  - Texas Watershed Steward (December 9)
  - Homeowner Maintenance of Septic Systems (TBD)





# 2021 Cleanup Day

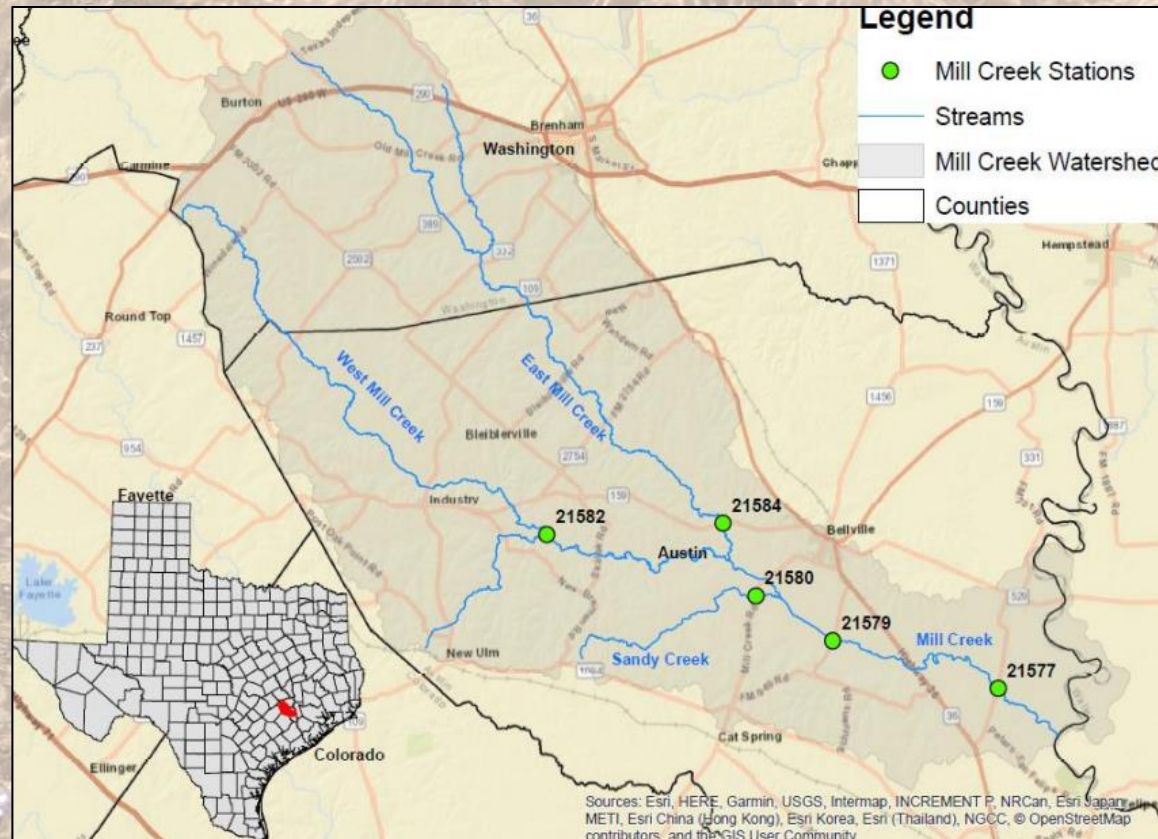
- Saturday, April 10
- Targeted private landowners in the watershed
- Centralized trash drop-off spot at Bleiblerville VFD
- 600 pounds of trash and debris removed





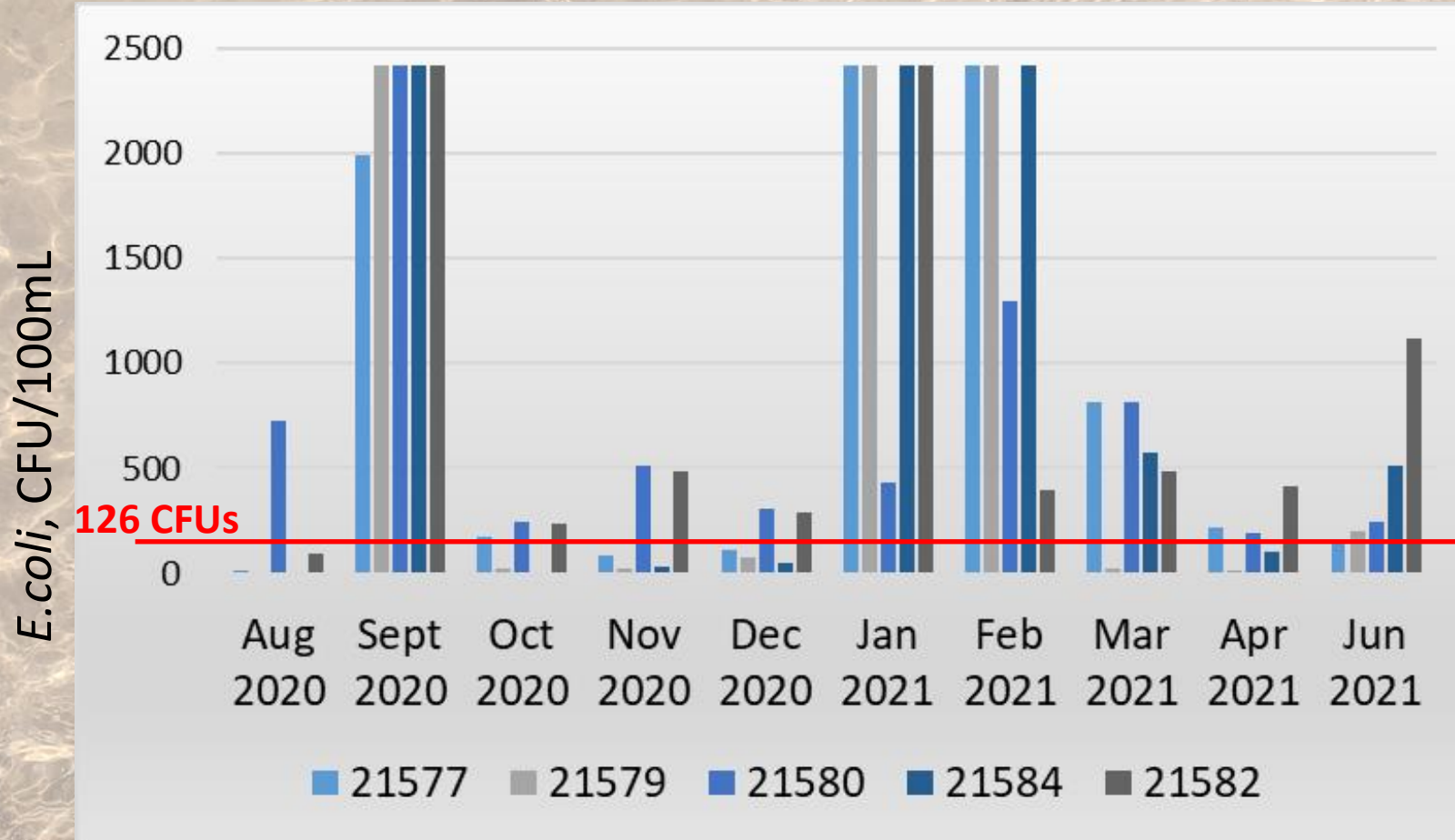
# Routine Water Quality Monitoring

- Monthly monitoring at 5 locations along the creek
- In partnership with the Texas Water Resources Institute





# Water Quality Data: 2020-2021



- *E. coli* levels should not exceed **126CFU/100mL**
- Max value of *E. coli* measured: **>2419.6 CFU/100mL**
- No May 2021 data

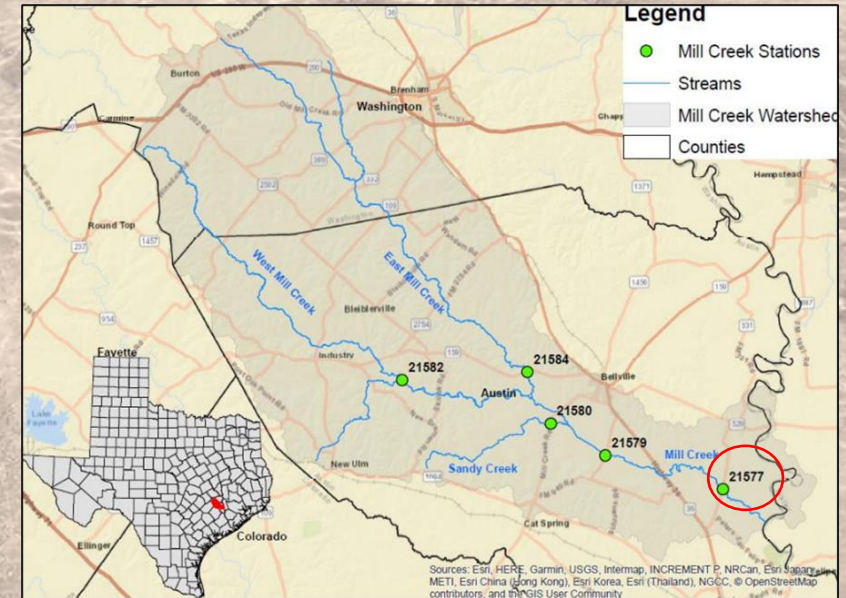
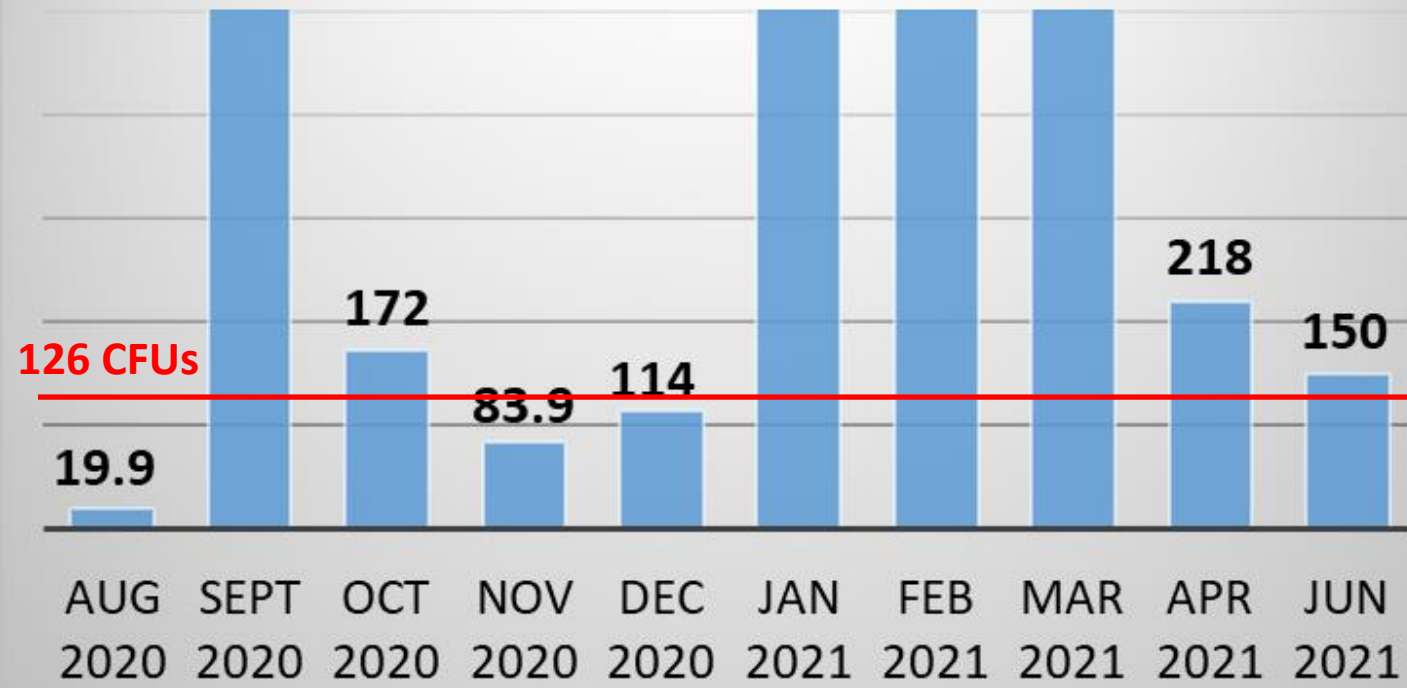




# Station 21577: Mill Creek at FM 331

*E. coli*, CFU/100mL

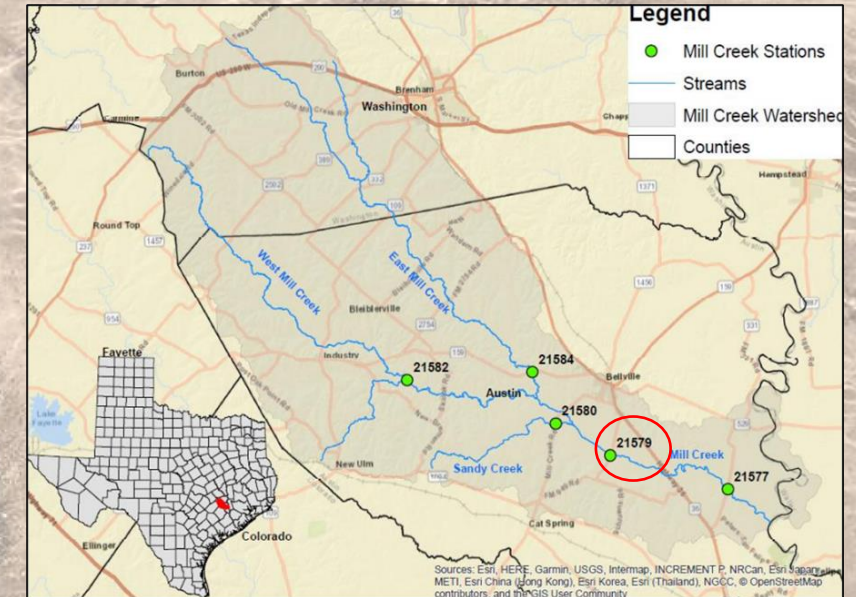
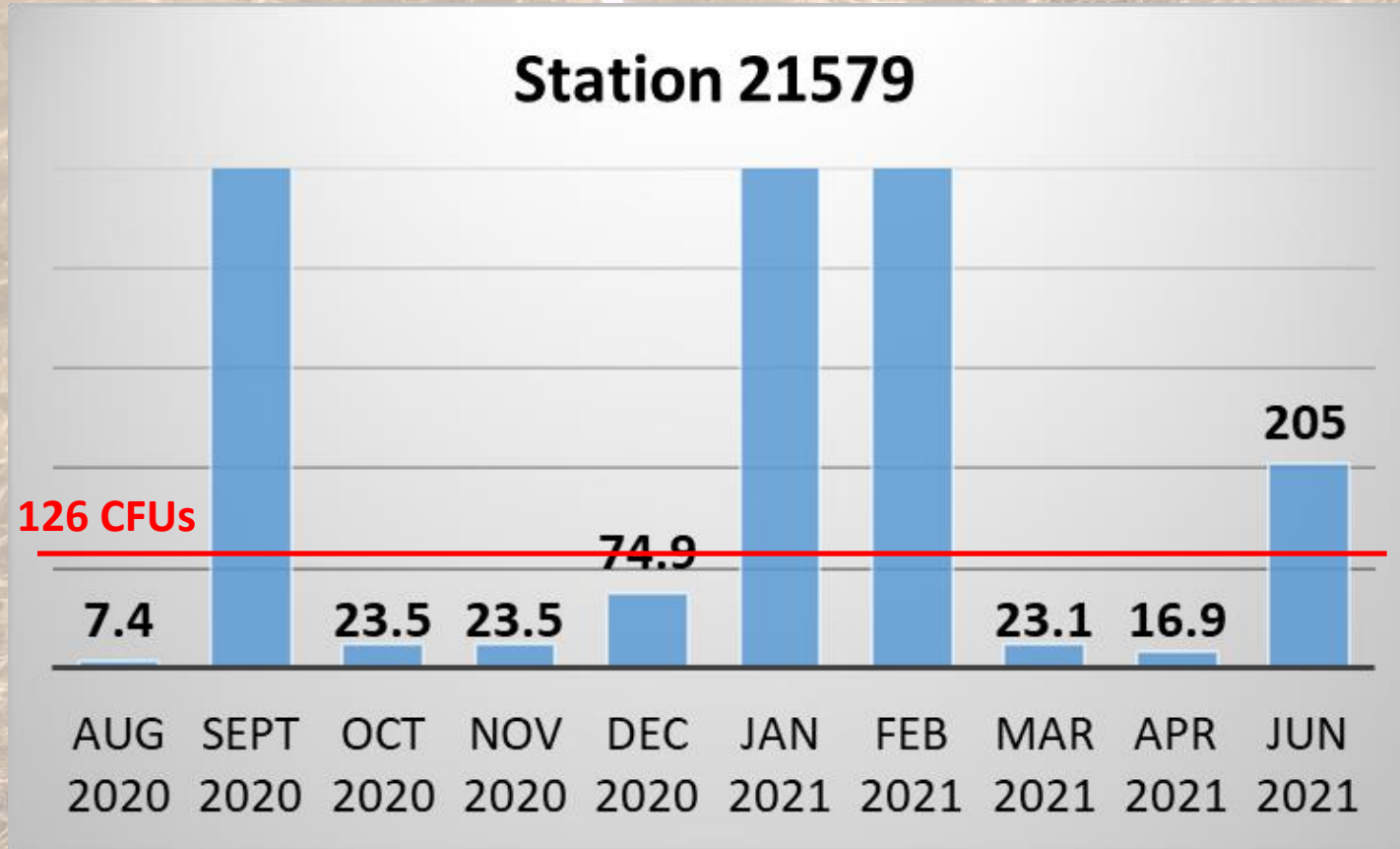
Station 21577





# Station 21579: Mill Creek at FM 2429

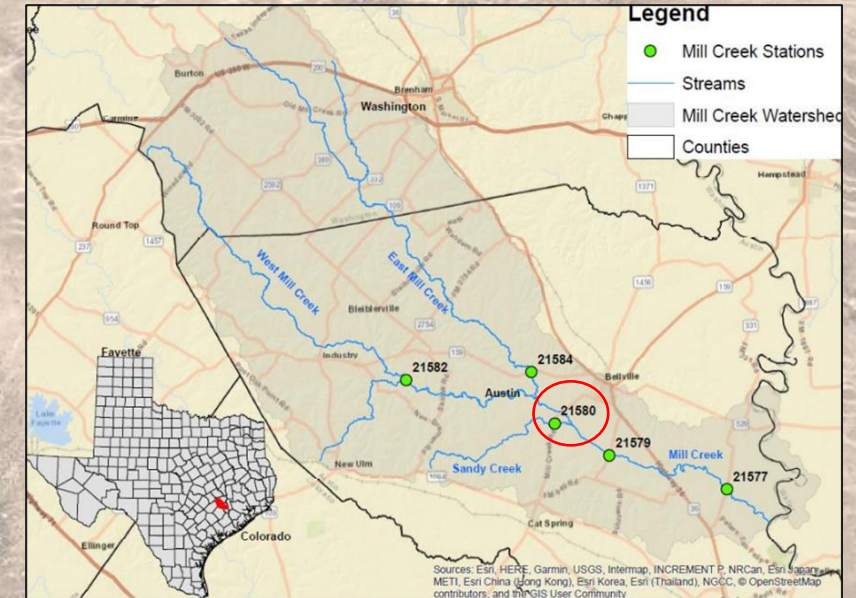
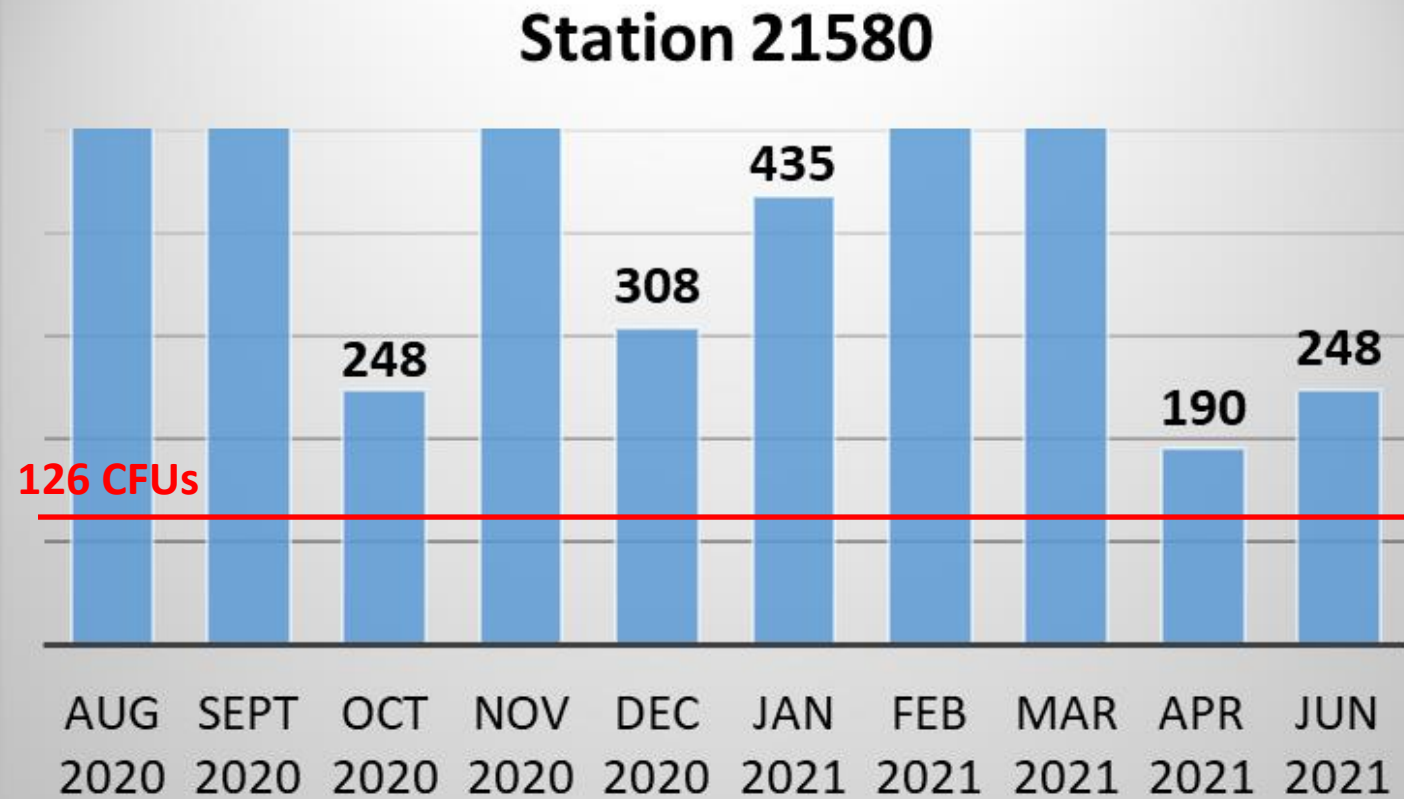
*E.coli*, CFU/100mL





# Station 21580: Sandy Creek at Mill Creek Road

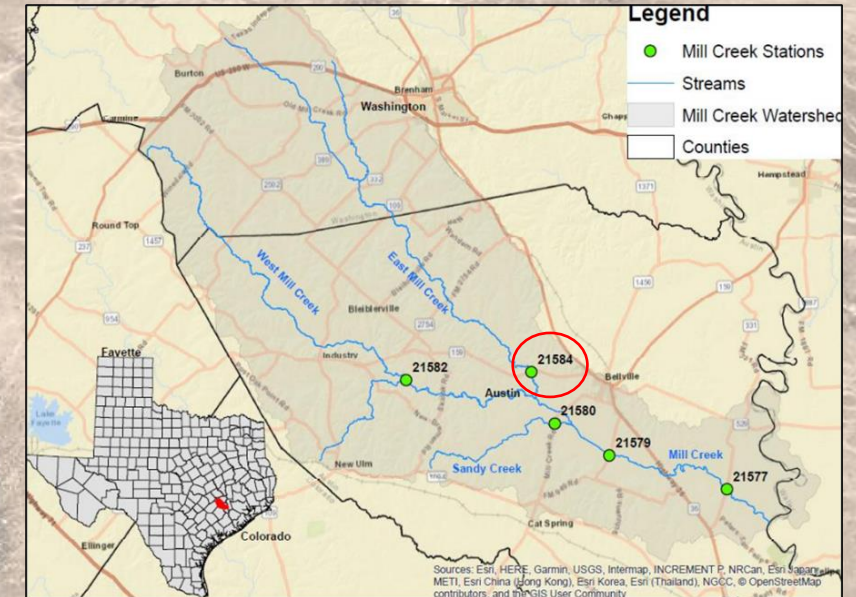
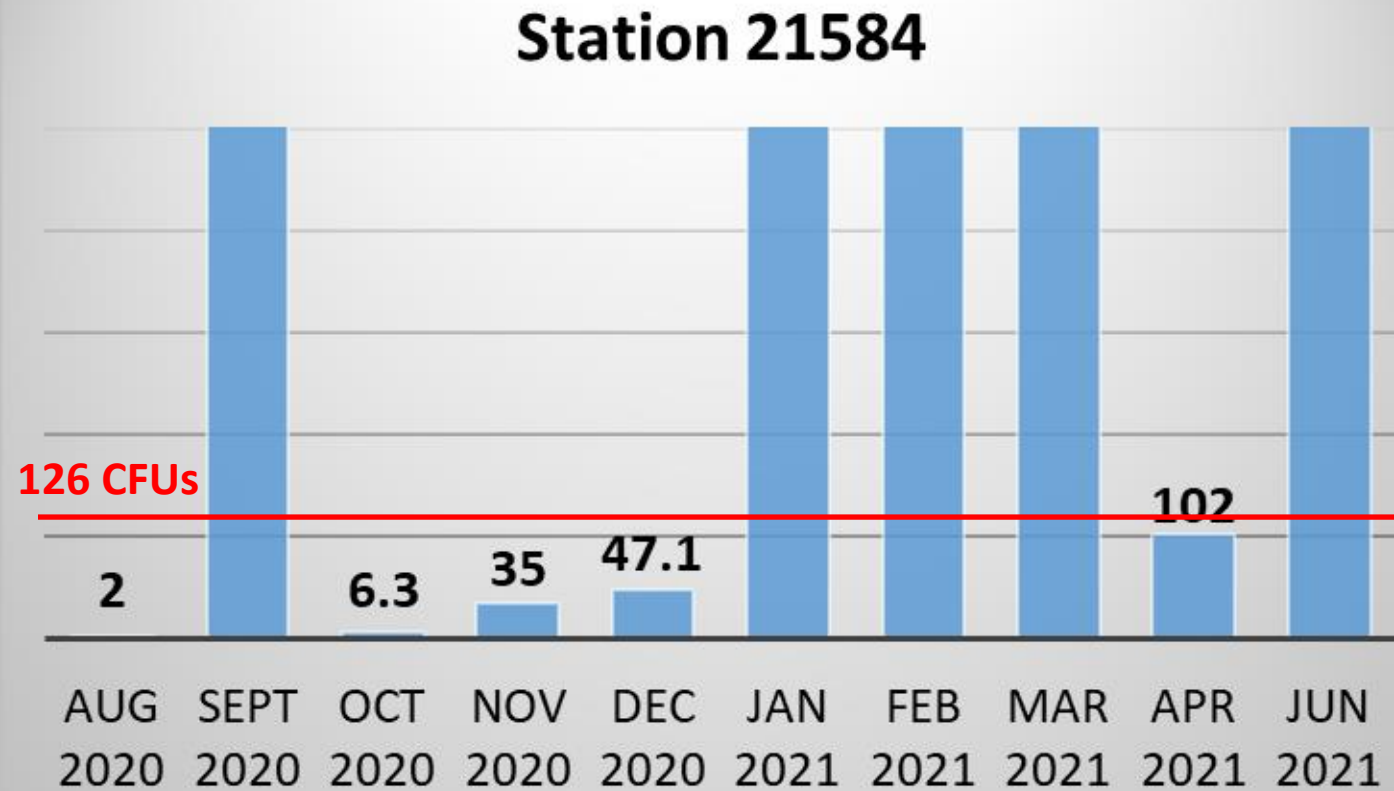
*E. coli*, CFU/100mL





# Station 21584: East Fork Mill Creek at FM 159

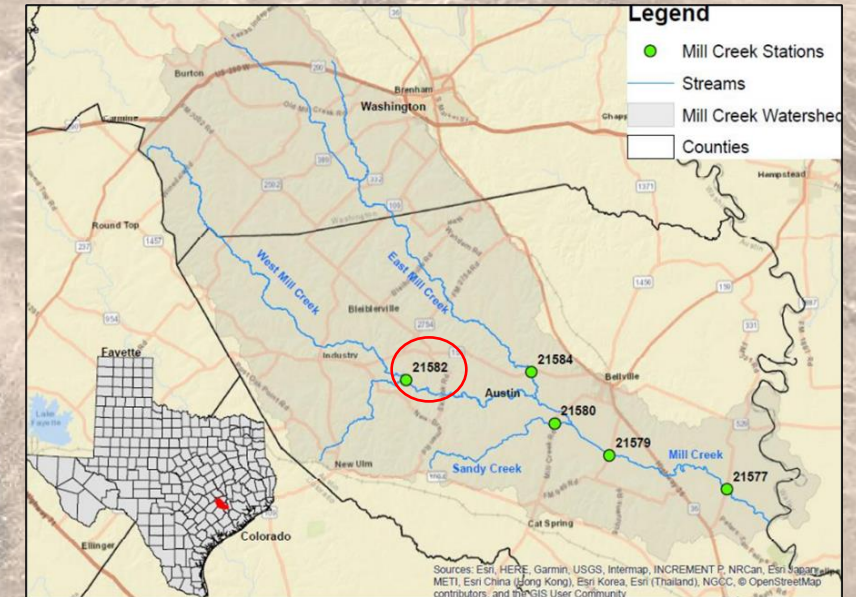
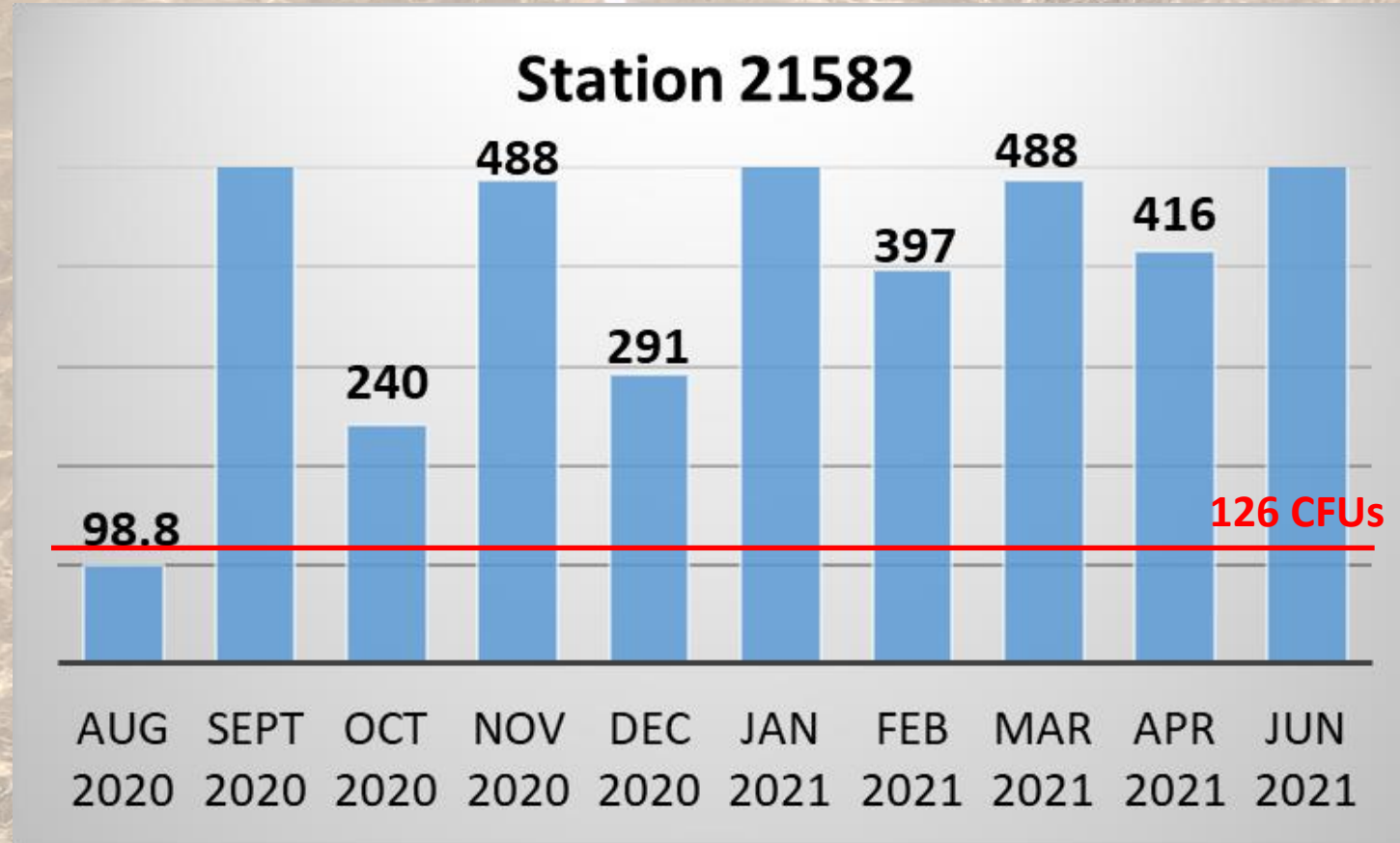
*E.coli*, CFU/100mL





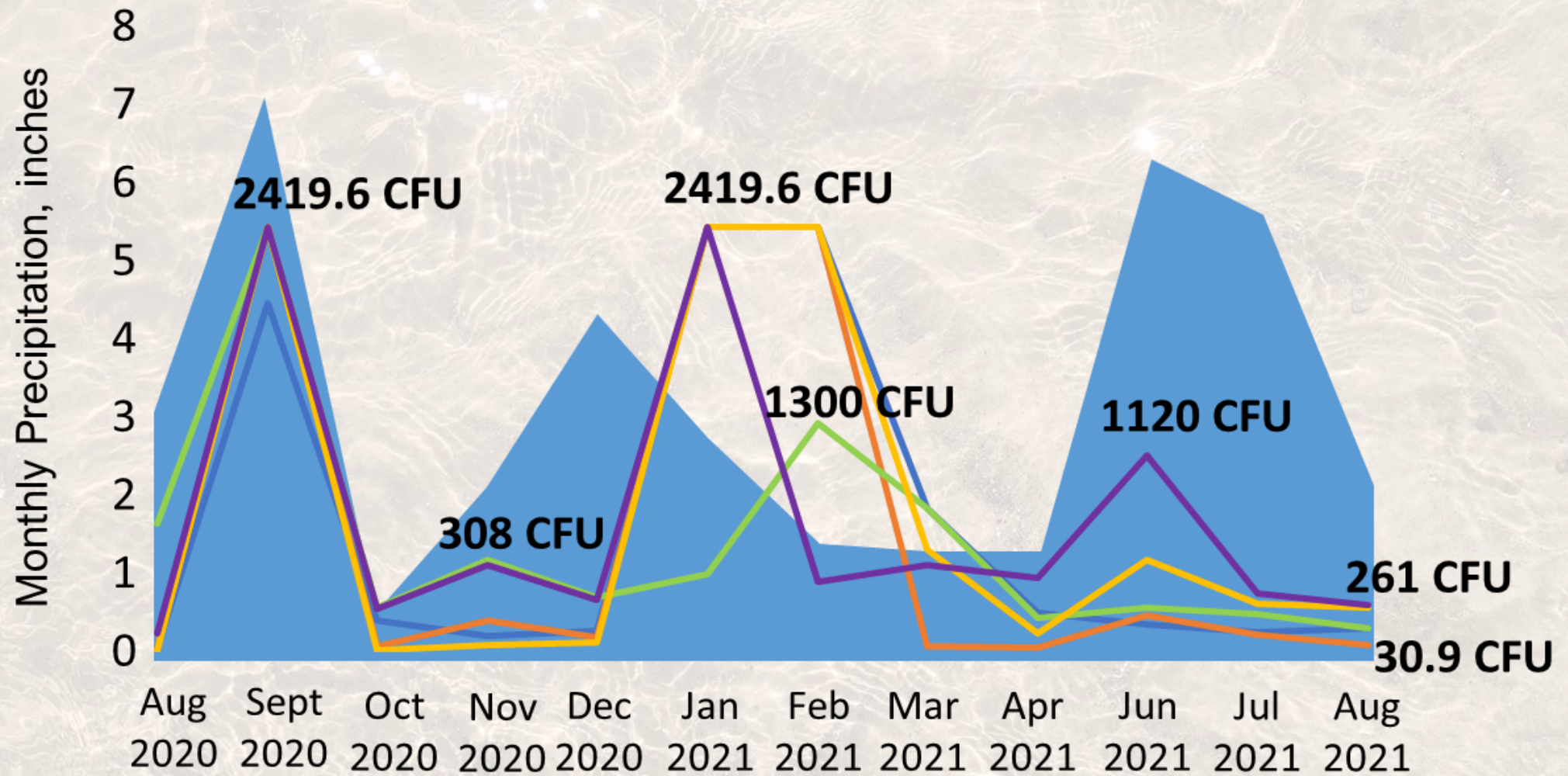
# Station 21582: West Mill Creek at Tiemann Road

*E.coli*, CFU/100mL





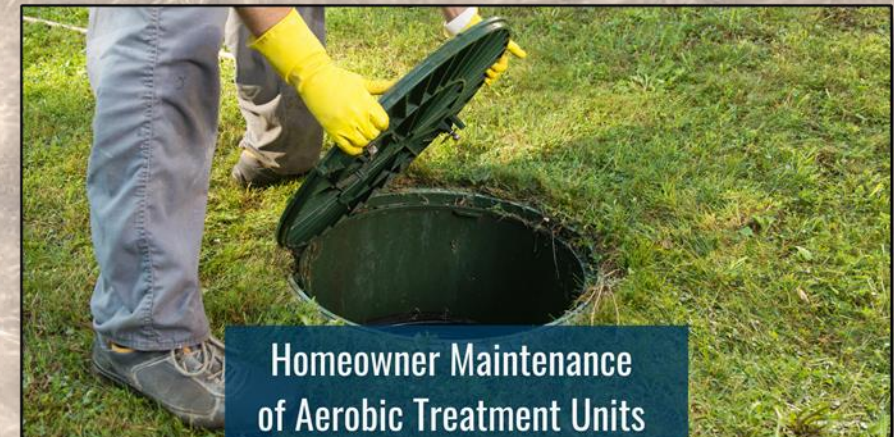
# Rainfall and *E.coli* Levels





# Homeowner Maintenance of Septic Systems Online Course

- Available via AgriLife Learn
- 7-hour course with quizzes
- 30 days to complete
- Course fee: \$150
- Eligible for certification in Austin and Washington Counties  
(other counties – check!)



## COURSE INFORMATION

An aerobic septic system, or aerobic treatment unit (ATU), uses oxygen to breakdown both dissolved and solid constituents into gases, cell mass, and non-degradable material contained in wastewater. This online course will teach you how to properly maintain and operate your ATU.

### Topics

- Understand the basic operation and maintenance activities for an ATU
- Be a better consumer in the onsite wastewater treatment industry
- Have the knowledge needed to understand and communicate with maintenance providers

### Course Details

**Cost:** \$150

**Duration:** 30 days from sign-up date

To register, go to [tx.ag/EnrollAerobicTreatment](https://tx.ag/EnrollAerobicTreatment) and click 'Enroll Now'.

Available to Texans in approved counties starting **April 1**.

Visit [tx.ag/HomeAerobicTreatmentSystems](https://tx.ag/HomeAerobicTreatmentSystems) for more information.



### Contact

Dr. Anish Jantrania  
[Anish.jantrania@ag.tamu.edu](mailto:Anish.jantrania@ag.tamu.edu)



# Want to Get Involved?

- Mill Creek Watershed Partnership Meetings
- Stay in touch with your CEA
- Visit [www.millcreek.tamu.edu](http://www.millcreek.tamu.edu) and subscribe to our newsletter
- Find us on Twitter and Facebook: [@MillCreekWater](https://twitter.com/MillCreekWater)
- Reach out to the Watershed Coordinator at [millcreek@ag.tamu.edu](mailto:millcreek@ag.tamu.edu) or **(979) 845-2862**.





# Mill Creek WPP Partners





# THANK YOU!

Evgenia Spears, Ph.D.  
Watershed Coordinator  
Texas A&M AgriLife Extension Service  
[millcreek@ag.tamu.edu](mailto:millcreek@ag.tamu.edu)  
(979) 845-2862

