

Mill Creek Watershed Protection Plan

Implementation Efforts



Jake Mowrer, Ph.D., & Evgenia Spears, Ph.D.

January 12, 2021

Mill Creek Watershed Partnership, Virtual Stakeholder Meeting

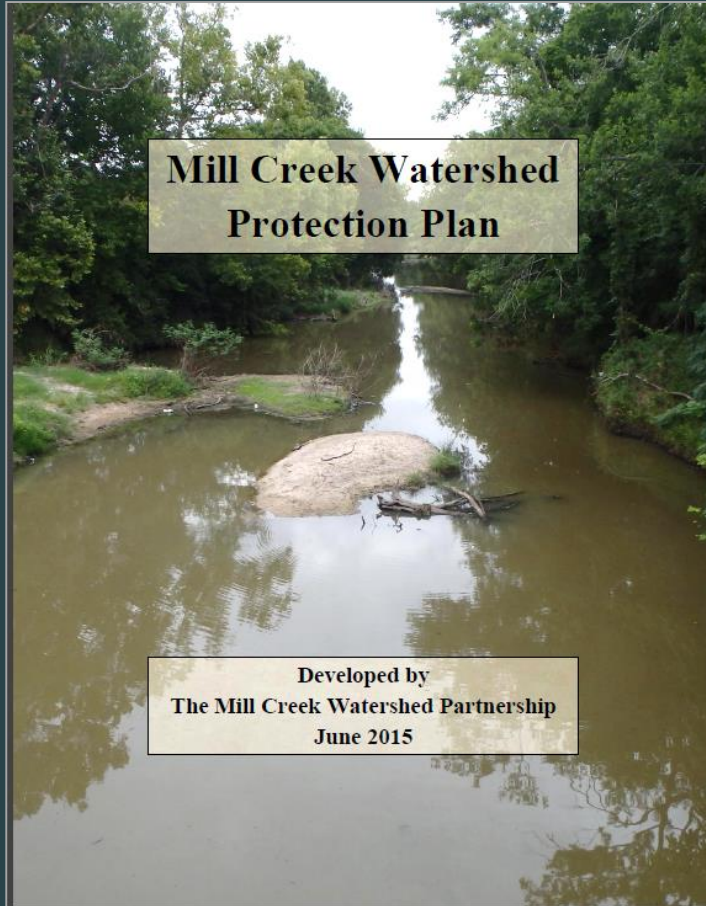


Project History



- 2014 - Mill Creek listed impaired due to high levels of *E.coli*
- January 2015 - a WPP initiated
- February 2016 - accepted by EPA

Mill Creek Watershed Protection Plan



- To reduce the amount of bacteria getting into the creek, and meet the water quality standards
- All measures are voluntary
- Heavy focus on public outreach and education

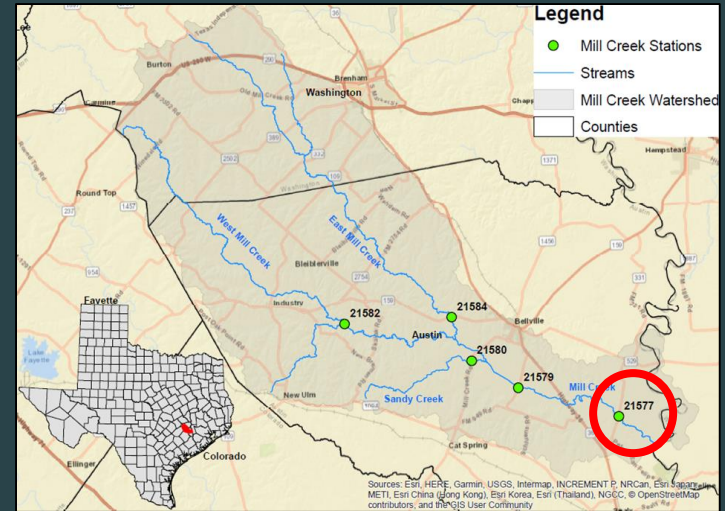
Management Measures

- Urban nonpoint sources
- Wastewater
- Agricultural nonpoint sources
- Wildlife and nondomestic animals



Water Quality Monitoring: Historical Data

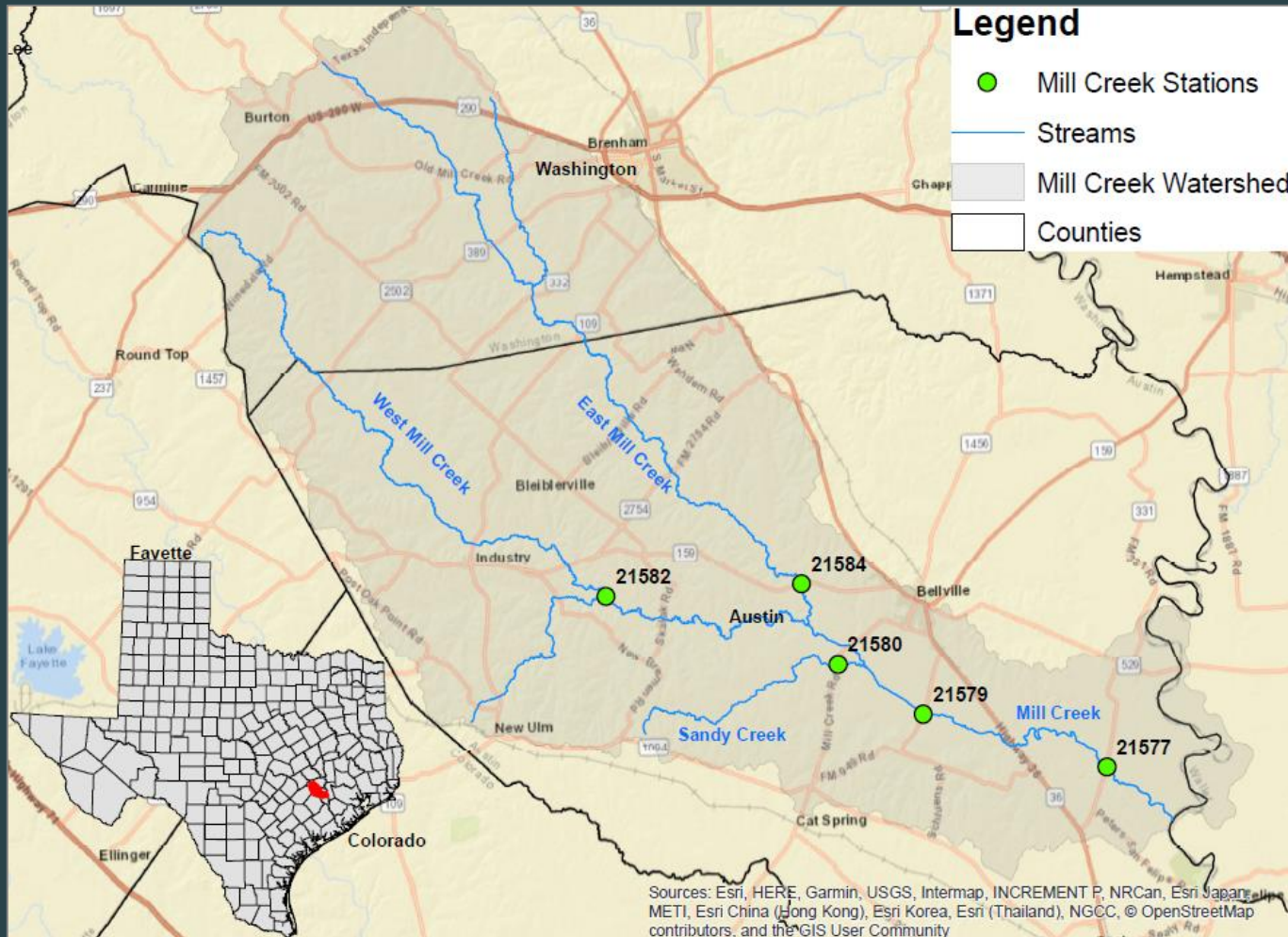
**Summary of historic data -
South of SH 36 from 1997-2015
(leading up to placement on 303(d) list.)**



- E. Coli - 19 total measurements** exceeded 126 CFU (Oct -Feb)
- Total N - 6 measurements** above 1 mg / L (summer months)
- Total P - 33 measurements** above 0.1 mg / L (Oct - Feb)

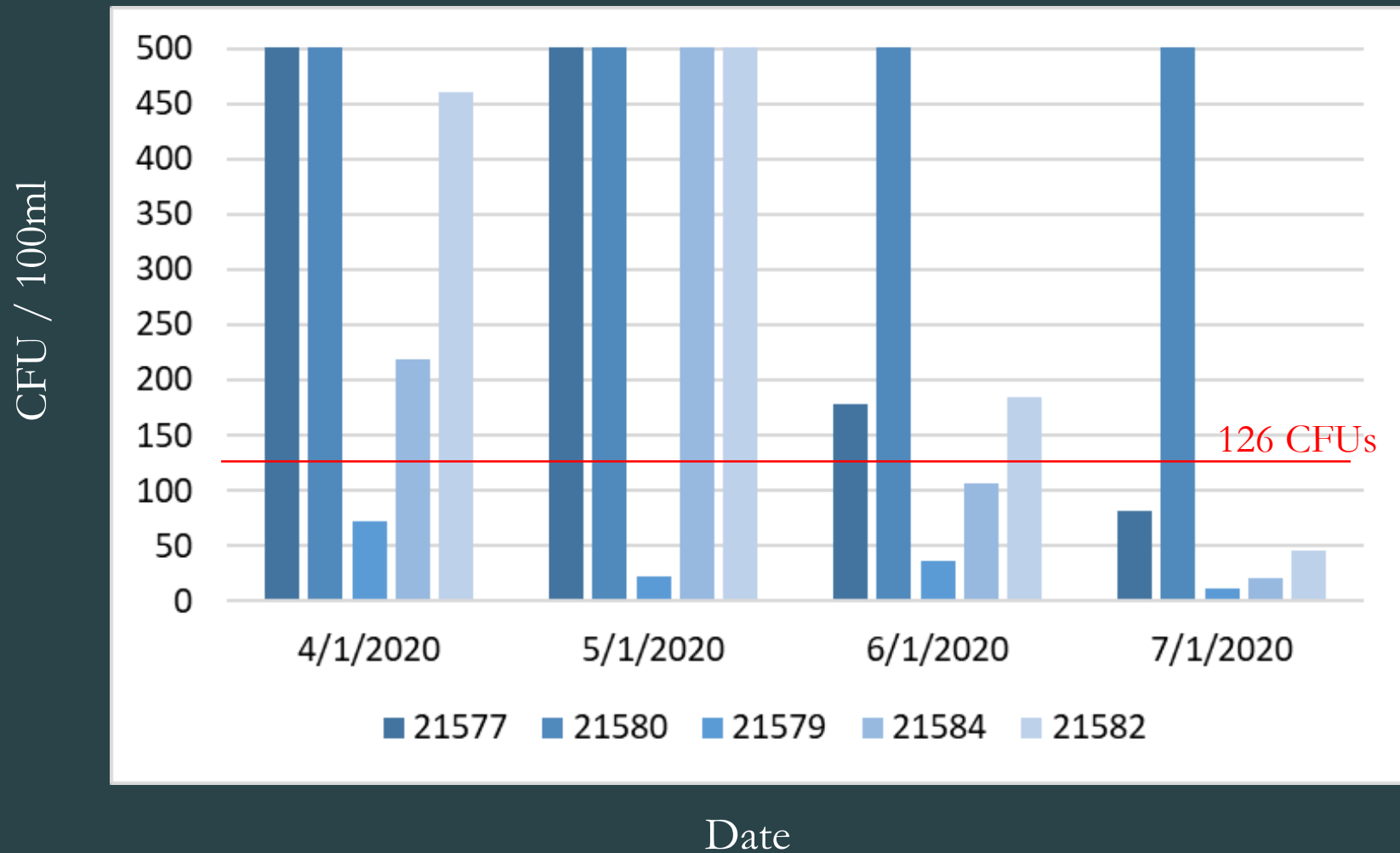
Water Quality Monitoring: Current Plan

Regular monitoring occurs at 5 locations



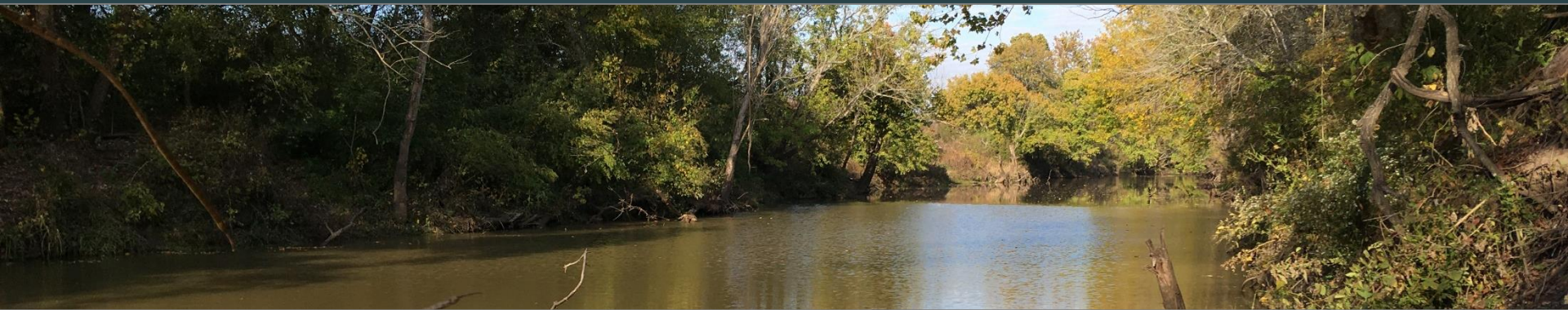
Water Quality Monitoring: 2020 data

E. Coli measurements at 5 locations this year



Want to Get Involved?

- Mill Creek Watershed Partnership Meetings
- Stay in touch with your CEA
- Visit www.millcreek.tamu.edu for updates
- Find us on Twitter and Facebook: [@MillCreekWater](https://twitter.com/MillCreekWater)
- Reach out to the Watershed Coordinator at millcreek@tamu.edu or (979) 845-2862



Partners



Questions and Comments?

